



Learning Disability Partnership Board Minutes

6 October 2020

These people came to the Partnership Board meeting

Learning Disability Partnership Board Co-chairs.

Jan Marriott and Tim Heaven

Sue Walters, Family Carer. Jacky Martell, Parent Carer.

Bren McInerney, Board Member. Bill Singh, MHELO.

Deborah Livingstone, Independent Supporter.

Emily Williams, Saracen Care. Chris Davis, Active Gloucestershire.

Katy Tucker, Kingfishers Treasure Seekers



People from Inclusion Gloucestershire.

Clare Hopkins, Vicci Livingstone-Thompson, Gemma, Jamie,

Jo Williamson, Nick Baker, Clare Howell, Nathan, Louise,

Rosie Mockford, Dawn Crawford

Jennie Goodrum and Megan Paul from You're Welcome.

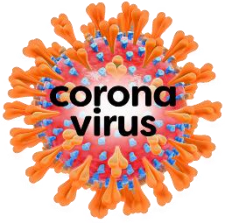
Lorna Carter and Denise Pittaway from Gloucestershire Carers Hub

Caroline Eardley and Nicole Hastie from Active Impact.

People from Gloucestershire County Council.

Kirsten Smart, Holly Beaman, Cheryl Hampson, Neryl Bice,

Noor Al-Koky, Grace Booker, Kelley Bryant.



Holly Beaman – Information about Covid 19 (Coronavirus)

Holly said that there are more people catching Covid 19.

You can see more information about Gloucestershire using the website link.



<https://www.gloucestershire.gov.uk/inform/health/coronavirus-covid-19-intelligence-for-gloucestershire/>

At the moment the main things the Government wants us to do are,

Wear masks on public transport and in shops.

You can't meet in groups of more than 6 people.

Pubs have to close at 10pm.

Keep washing your hands.

Stay 2 metres or 2 big steps apart from other people.



Since this meeting, the rules have changed.

We have been told not to meet more than one person outside and to stay at home. This is called Lockdown 2 or the Circuit Breaker.



Holly said we have been asked to share our work during Covid 19 (Coronavirus) with other areas because we have been doing some good work.

It is important that you get your **flu jab**, you should ask your doctor or chemist about it.

There will be information for people with learning disabilities and their carers in the next partnership bulletin about the changes that can be made to help them get their flu jab in a way that suits them. This is called reasonable adjustments.

If anyone has any problems they can email disabilitiescommissioning@gloucestershire.gov.uk





There is lots more information in the partnership board bulletin, you can find it at the address below.

<https://www.gloucestershire.gov.uk/health-and-social-care/disabilities/partnership-boards/>



Tim and Clare from Inclusion Gloucestershire shared the information from their research.

Tim and Clare have been finding out how Partnership Boards and working together, (this is called co-production), is happening in other areas.

Their research is to help make the partnership boards and working together better in Gloucestershire

What they did.

- Tim and Clare looked at 30 council websites
- They made a survey and asked councils to fill it in.



What information they looked for.

- Which partnership board councils had.
- How the partnership boards work together.
- How people with lived experience were involved.
- Did the partnership boards have rules about how they work?
- How the partnership board reports to the big bosses.

What Tim and Clare found out?

- Not many councils answered the survey.
- Looking at websites did not help much

What they are doing next.

Tim and Clare are having ZOOM meetings with different councils and asking questions to help find out more about their partnership boards.

Tim and Clare have written reports about the work they have done, they will write a report about what they find out from their ZOOM meetings.





Tim and Clare asked the people at the Partnership Board meeting to work in small groups to think about these things,

- What is working well at the Learning Disability Partnership Board? What do you like about the Board?
- What is not working so well? What is not so good about the Board? What do you not like?
- What would you like to see changed in future meetings?

Here is some of what the groups thought.

Working Well

Partnership board bulletin is useful.

User led.

Everyone has a voice, Inclusive.

Tim makes sure everyone gets a chance to speak.

Easy to access meetings.

On Zoom Meetings feel more informal, not scary to speak up



Not working so well.

Sometimes too many people in the room.

Hard to get to meetings before Covid 19.

How do people get involved?

How to join the board.

Have less on the agenda .

Board doesn't have as much influence as it used to.



What would you like to see changed?

People with lived experience to have more say.

Option of virtual and face to face meetings, so everyone can attend.

Is the board available for children? Check in the meeting rules.

More people who make decisions in the county to come and answer questions

Action log – feedback of issues raised and what's happened with them

Big Plan 2 needed



You're



You're Welcome website – Jennie, Megan and Nicole from Active Impact.

The You're Welcome website has information about activities that include everyone.

Active Impact have taken it over from Barnwood Trust and have added new things.

You can search for things in your area or for your needs.

There is information about online and face to face events.

You can use the link to check out the website.

www.yourewelcomeglos.org

You can sign up on your own or as a group.

You can get emails about things you might be interested in.

Groups can put their events on the website.

There is a blog and a Forum where people can chat and share ideas.

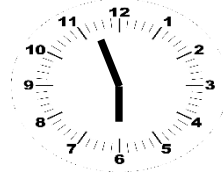
There was no other business this meeting.

December

10 2020

Next meeting is Friday 10 December 2020

10am – 11.30am



Gloucestershire
**Learning Disability
Partnership Board**



Created by EaRWIG Easy Read with Inclusion Gloucestershire

